

BESSEY® Product Training



BESSEY® Tools North America
Woodworking Table Adaptor: TW16AW19



TW16AW19: Woodworking table adaptor

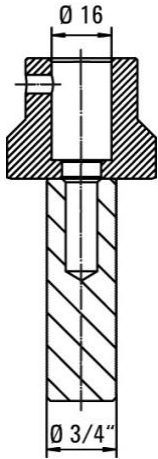


Application: Workbenches with $\frac{3}{4}$ " hole system such as Sjöbergs workbenches

TW16AW19: Woodworking table adaptor



Simply better.



Product Features

Clamping elements TW16 and TWV16 can be used on a woodworking bench with hole diameter patterns of $\frac{3}{4}$ IN when used in combination with the TW16AW19 adaptor. All tools are from BESSEY Tools

Customer Benefits

Easily set up, easily placed for clamp fixturing on a table and easily removed...these tools offer a degree of flexibility for woodworking that is solid and secure.

TW16AW19: Woodworking table adaptor



Simply better.



Step 1

Insert the clamping element TW16 or TWV16 into the TW16AW19 adaptor.

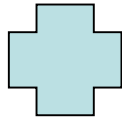
Step 2

Tighten the set screw

Step 3

Insert the clamp element with adaptor into the workbench and clamp your project

TW16AW19: Woodworking table adaptor



TW16AW19: Woodworking table adaptor



Simply better.



TW16AW19: Woodworking table adaptor



TW16AW19: Woodworking table adaptor





Simply better.

Thank you for your attention!

BESSEY® Tools North America